

Leafy Narre Warren Room Vacancy



Wallara
Grow. Work. Explore. Live.



A fabulous opportunity to live in a spacious 5-bedroom home in a central location – close to parks, transport, cafes & restaurants and Fountain Gate Shopping Centre.

This property is owned by the Department of Families, Fairness & Housing with staff support provided by Wallara Australia Ltd.



This lovely house is complete with:

- Open plan kitchen and dining room
- Two living areas and two bathrooms
- Plenty of natural light
- Ducted heating and cooling
- Lovely gazebo in an ample backyard



**Two
Bathrooms**



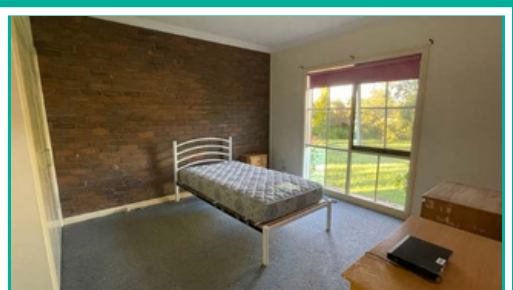
**Open Plan
Areas**



**Public
Transport**



**Close to
Parks**



The current residents (aged 35-50) are active and enjoy participating in activities together. They would like someone to join them who is nice and friendly.

The SDA Design category is Improved Liveability. It is wheelchair accessible and has a stepless entry and exit.

Wallara provides support seven days a week including sleepover support.

Please contact the Vacancy Coordination Team on southvct@dffh.vic.gov.au